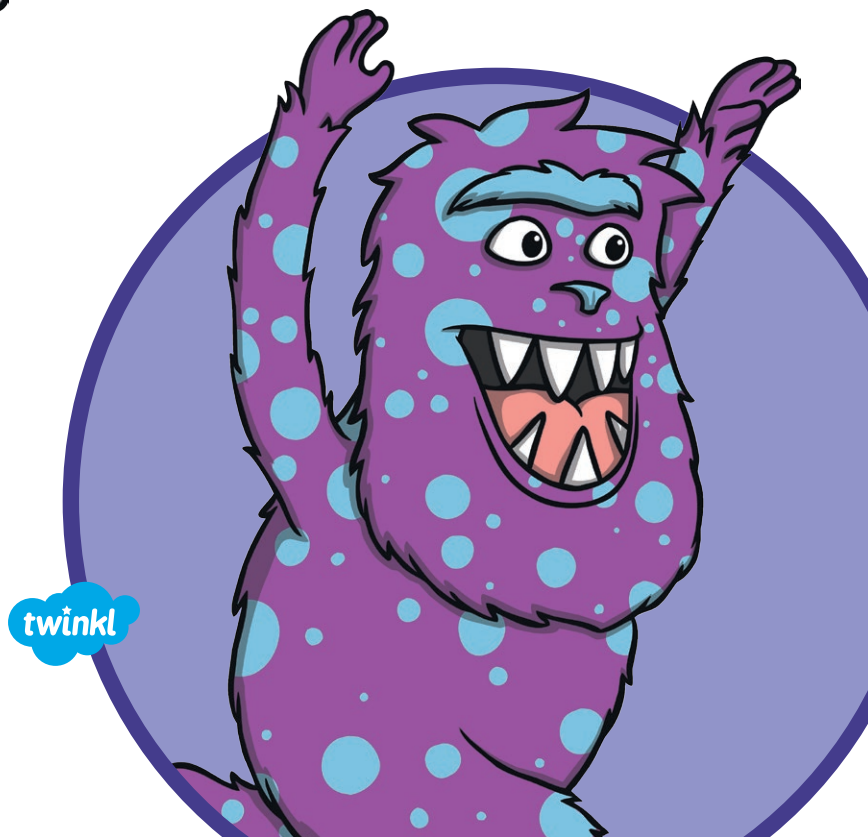
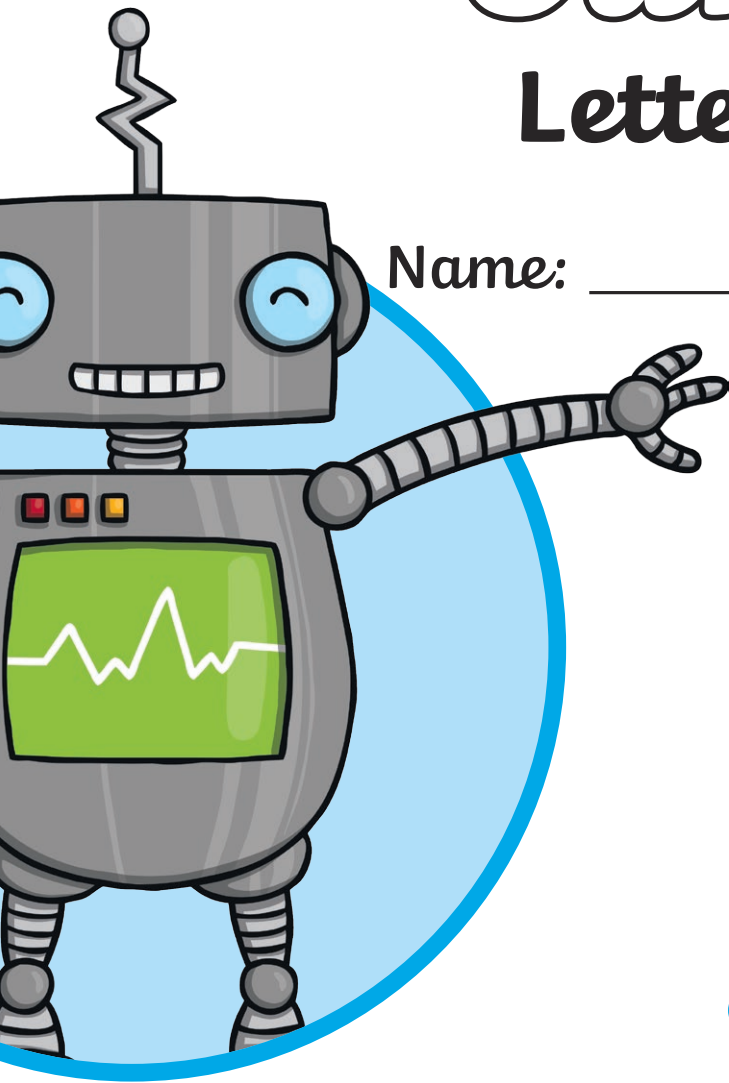


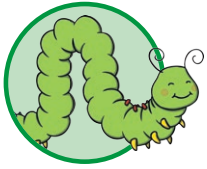
KS1

Cursive

Letter Joins

Name: _____





Joining the Letter 'a'

Continue each line using diagonal joins.

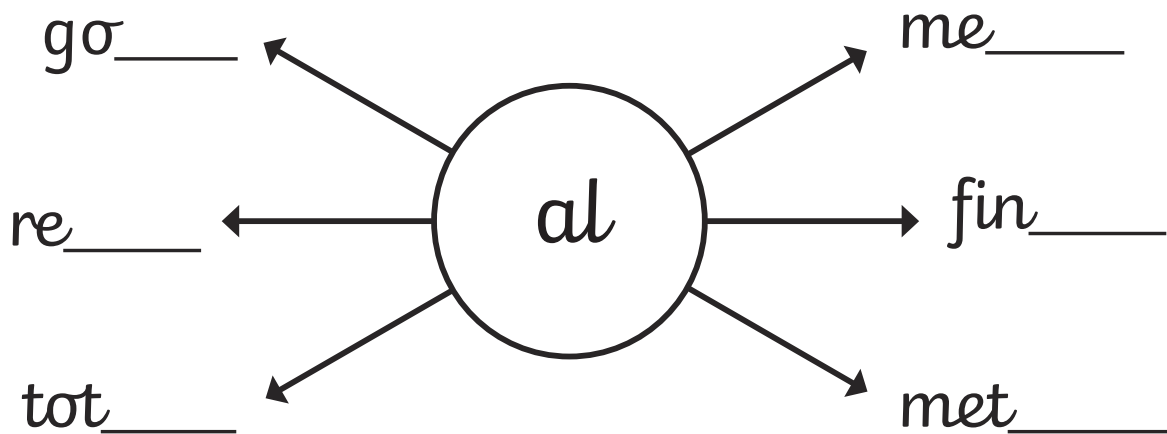
Take extra care when joining to an anticlockwise letter.

ay

ai

aa

Add the letter pattern 'al' into these words.



Add 'ai' or 'ay' to these words. What words have you created?

j____l

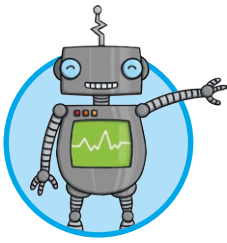
aw____

tod____

r____ny

st____

tr____l



Joining the Letter 'b'

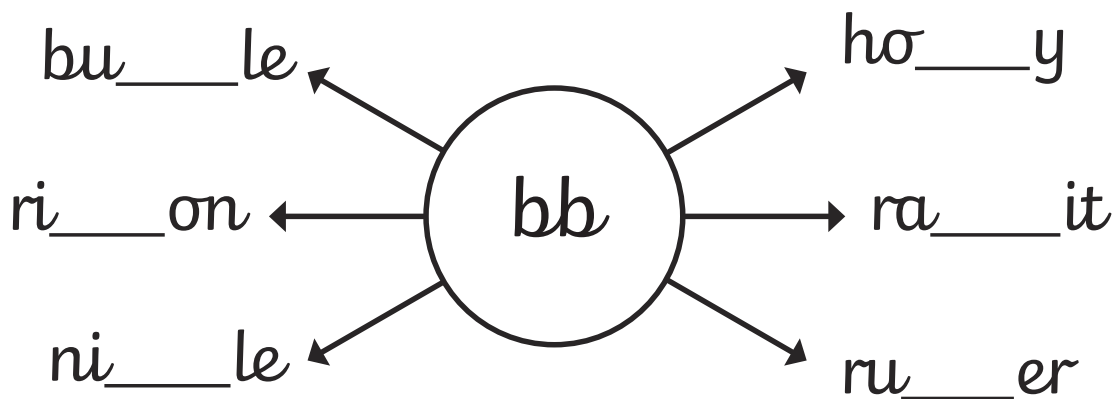
Continue each line using the trickier bottom join from the letter 'b'.

bi

bu

be

Add 'bb' into these words. Make sure that you go underneath the body of your 'b' before flicking diagonally to the next letter.



Add 'be' or 'bu' to the beginning of these words. Make sure that you join carefully from your 'b'. What words have you created?

__st

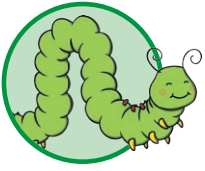
__ild

__ach

__lly

__ndy

__eping



Joining the Letter 'c'

Continue each line using diagonal joins.
Take extra care when joining to an anticlockwise letter.

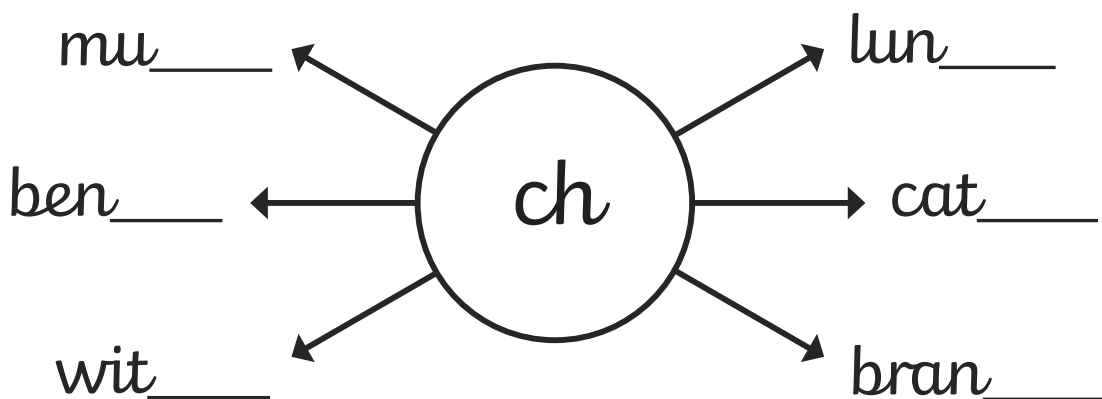
ch

cl

co

ca

Add the letter pattern 'ch' to the end of these words.
Make sure you join carefully using a diagonal join.



Add 'co' or 'ca' to the start of these words.
Make sure that you use your diagonal letter joins
to the anticlockwise letters. What words have you created?

___se

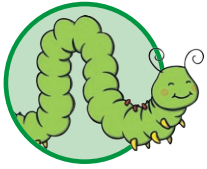
___ld

___stle

___st

___rry

___mic



Joining the Letter 'd'

Continue each line using diagonal joins.
Take extra care when joining to an anticlockwise letter.

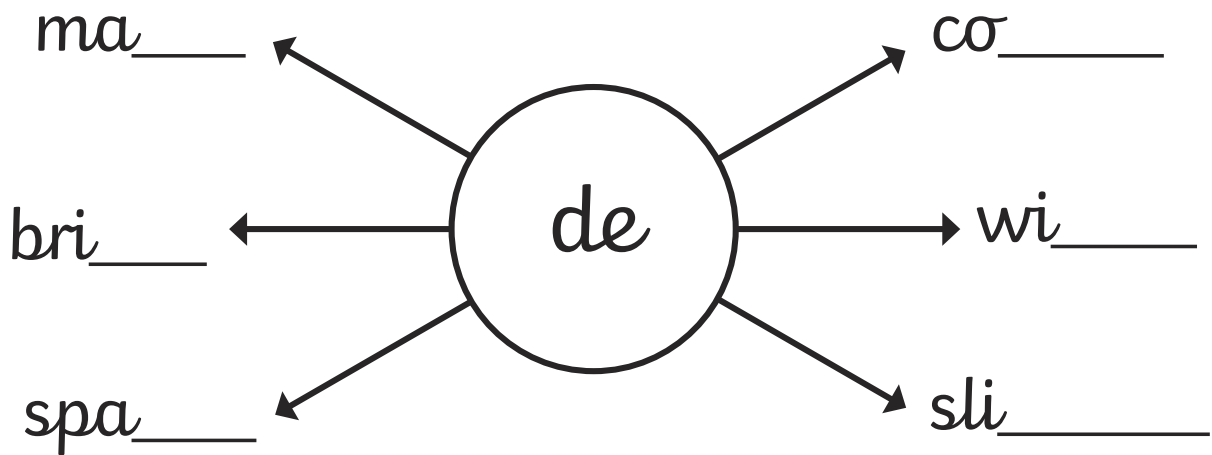
dd

de

do

da

Add the letter pattern 'de' to the end of these words. Make sure you join carefully using a diagonal join.



Add either 'da' or 'do' to these words. What words have you created?

pan_____

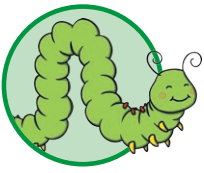
_____or

_____y

_____sh

_____wn

_____ne



Joining the Letter 'e'

ee

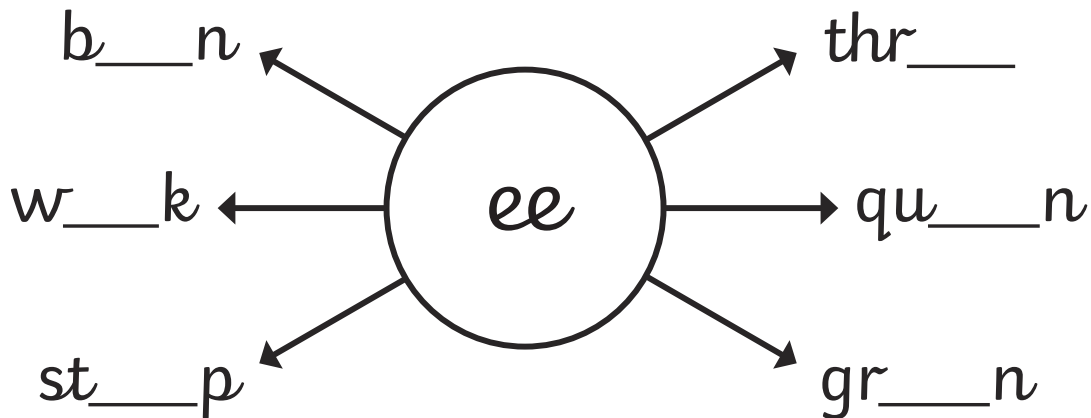
The letter patterns 'ei', 'ey' and 'eigh' can all make a long /a/ sound.
Continue each line using diagonal joins.

ei

ey

eigh

Add the letter pattern 'ee' into these words. Join the letters carefully.



Add 'ei' or 'ey' to these words to create a long /a/ sound. Make sure that you use your diagonal letter joins. What words have you created?

gr__

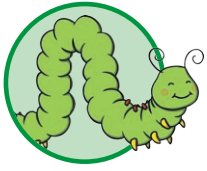
v__n

th__

pr__

v__l

r__ndeer



Joining to the Letter 'f'

Remember that 'f' is an unjoined letter so we never join from it, but we can join to it. Practise these diagonal joins to the letter 'f':

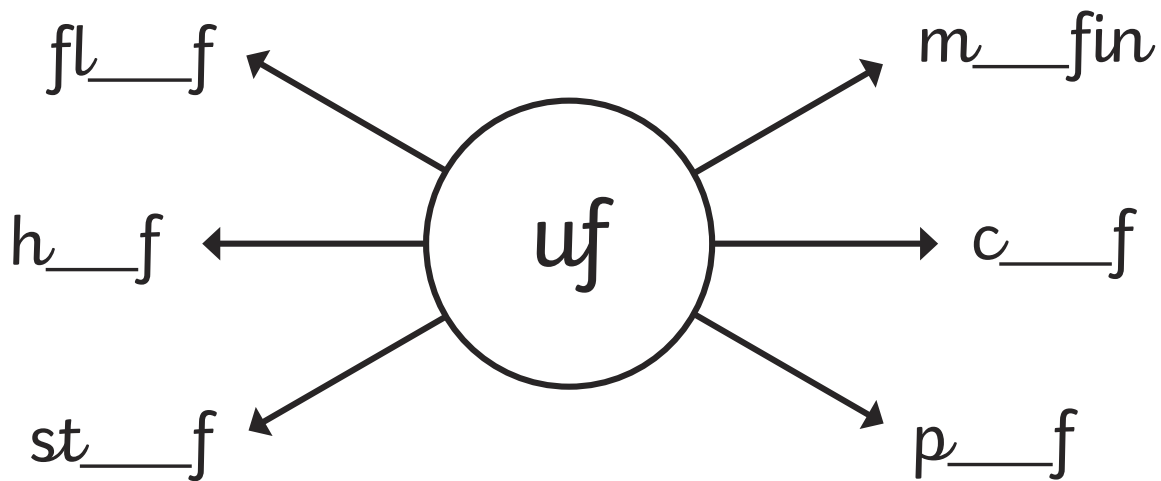
af

if

uf

ef

Add the 'uf' letter pattern to these words. Your 'u' can join on to your 'f', but remember that you don't join on from your 'f'.



Add either 'af' or 'if' to these words. Join carefully to your 'f' but don't join on from it. What words have you created?

s__e

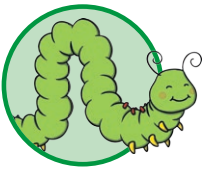
g__t

__ter

sn__f

w__e

le__



Joining to the Letter 'g'

Remember that 'g' is an unjoined letter so we never join from it, but we can join to it. Practise these joins to the letter 'g':

ag

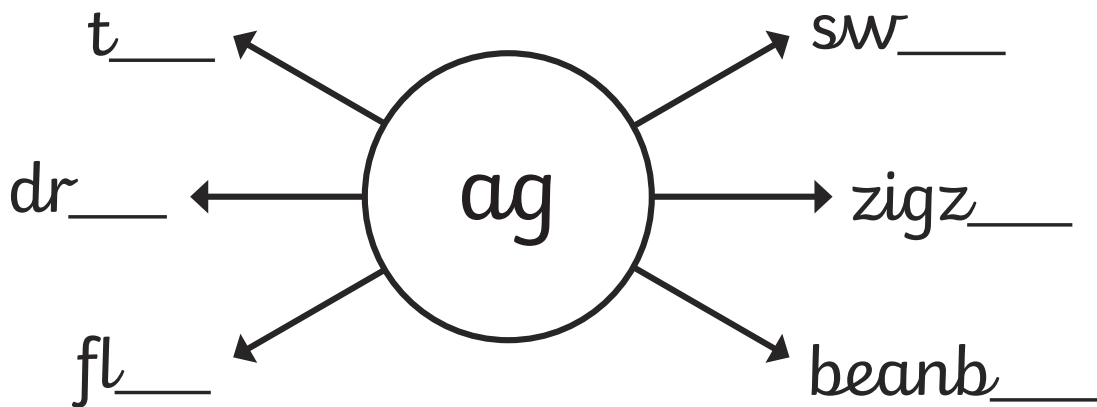
ig

ug

eg

ing

Add the 'ag' letter pattern to the end of these words. Your 'a' can join on to your 'g' using a diagonal join.



Add either 'ig' or 'ug' to these words. Join carefully to your 'g' but don't join on from it. What words have you created?

s___n

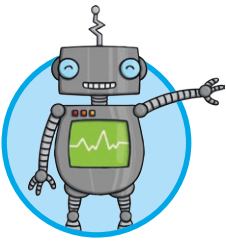
sl___

tw___s

s___ar

___loo

h___e



Joining the Letter 'h'

Continue each line using diagonal joins to these anticlockwise letters.

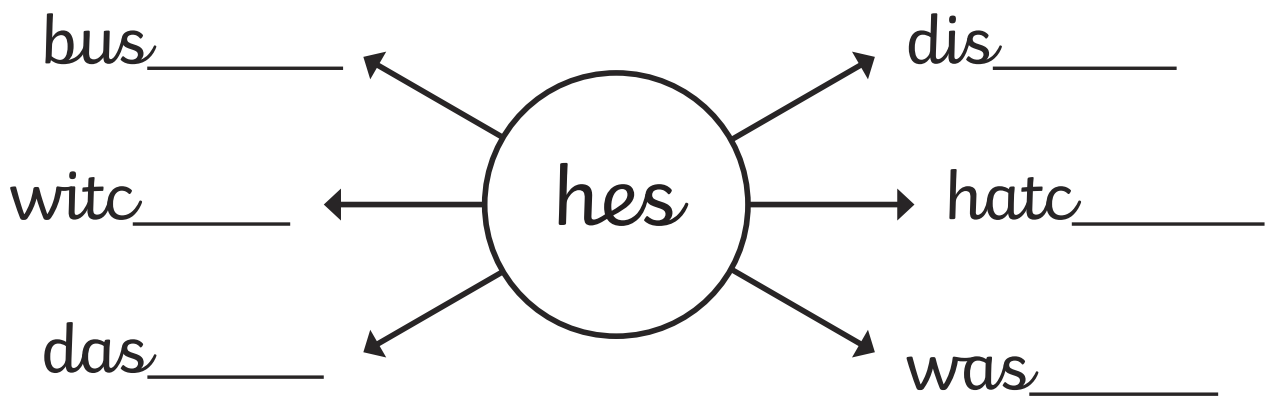
hc

ha

ho

hs

Add 'hes' to the end of these words.
What words have you made?



Add 'ho' or 'ha' to these words. Make sure that you use your diagonal letter joins. What words have you created?

_____ppy

_____tel

_____mmer

_____le

_____ve

_____pe



Joining the Letter 'i'

Continue each line of diagonal joins.
Don't dot the 'i' until you have completed both letters.

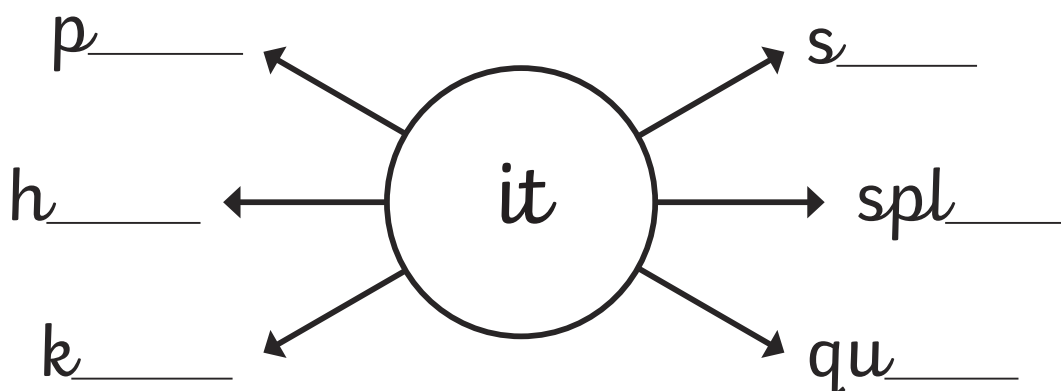
iu _____

iy _____

il _____

it _____

Add 'it' to the end of these words.
Make sure that you use your diagonal letter joins.



Add 'ill' or 'ilt' to the end of these words. Make sure that you use your diagonal letter joins. What words have you created?

qu _____

sp _____

p _____

bu _____

ch _____



Joining to the Letter 'j'

Remember that 'j' is an unjoined letter so we never join from it, but we can join to it.

Practise these joins to the letter 'j':

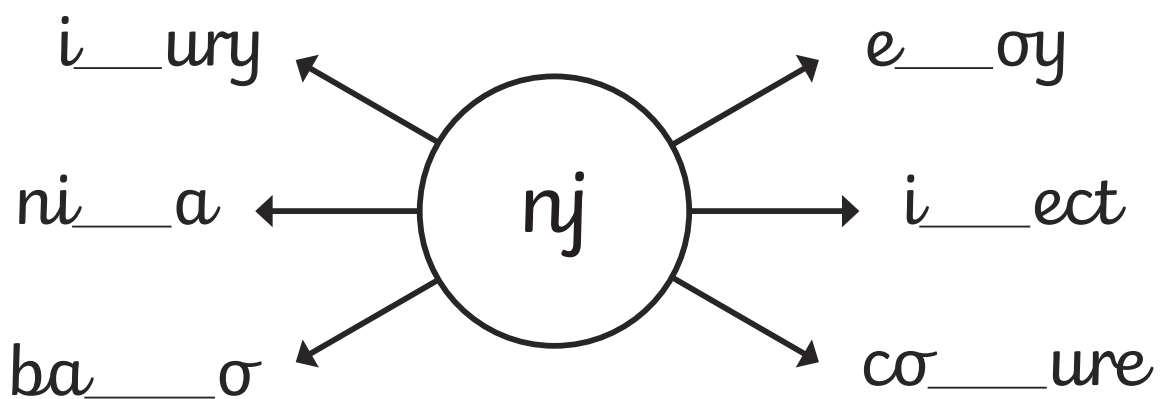
uj

nj

aj

bj

Add the 'nj' letter pattern to these words. Your 'n' can join on to your 'j', but remember that you don't join on from your 'j'.



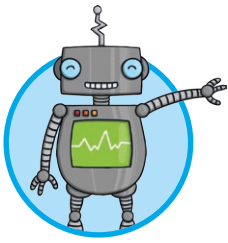
Add 'aj' or 'bj' to these words. Join carefully to your 'j' but don't join on from it. What words have you created?

o__ect

m__or

__ar

su__ect



Joining the Letter 'k'

Continue each line using diagonal joins to these anticlockwise letters.

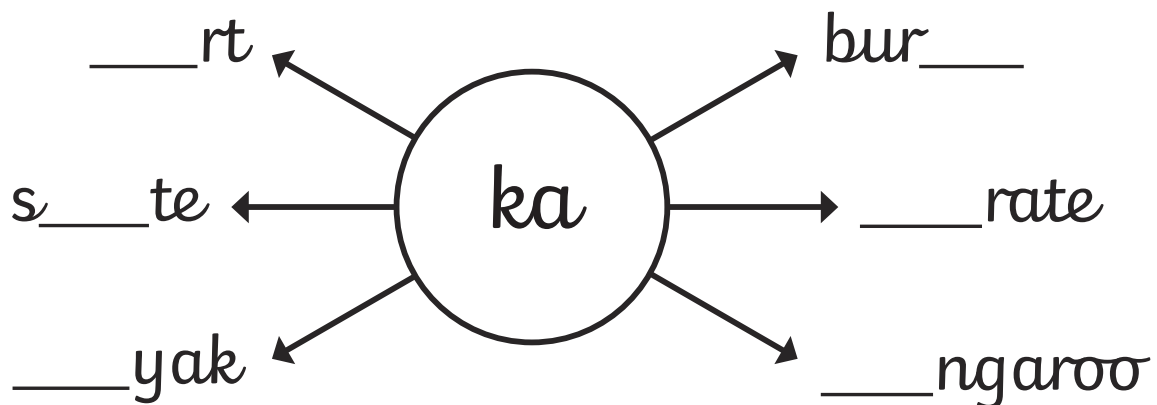
ka

ko

kd

kg

Add the letter pattern 'ka' into these words.
Make sure you join carefully to the anticlockwise letter.



Add 'ki' or 'ku' to these words. Make sure that you use your diagonal letter joins. What words have you created?

te

s es

s ll

s nk

ss

cked



Joining the Letter 'l'

Continue each line of diagonal joins:

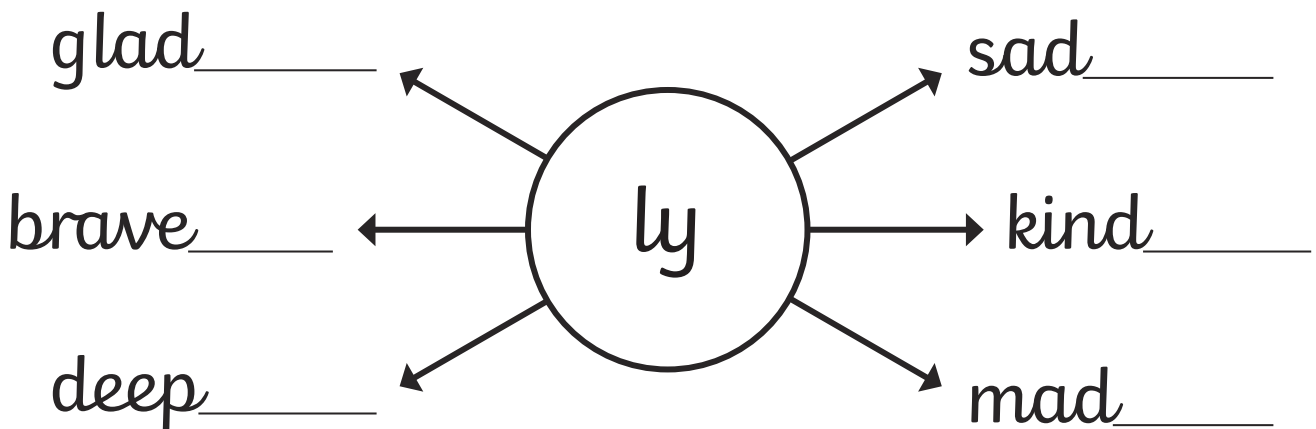
ll

li

lu

ly

Add 'ly' to the end of these words.
Make sure that you use your diagonal letter joins.



Add 'li' or 'lu' to the start of these words. Make sure that you use your diagonal letter joins. What words have you created?

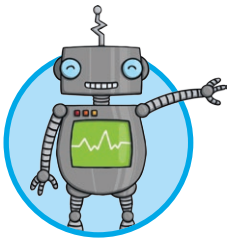
_____ght

_____cky

_____mpy

_____on

_____ved



Joining the Letter 'm'

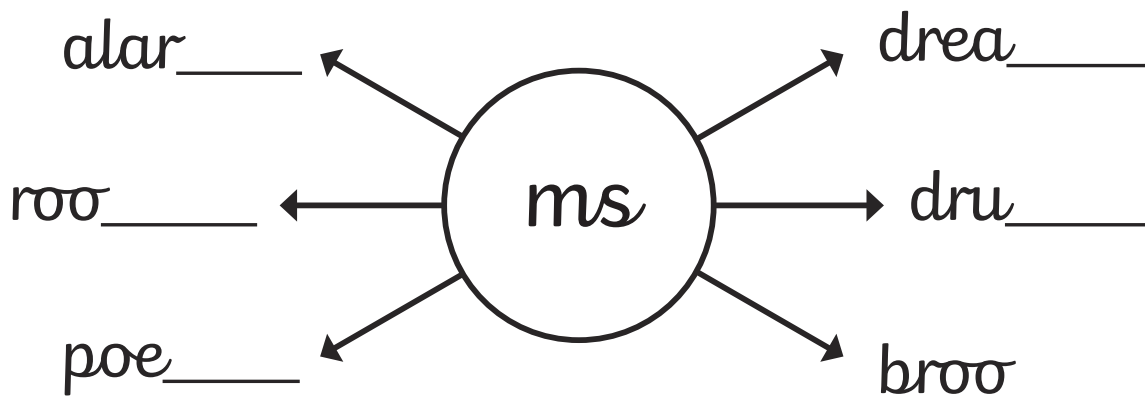
Continue each line using diagonal joins to these anticlockwise letters.

mo

ma

ms

Add 'ms' to the end of these plural words.
Make sure that you use your diagonal letter joins.



Add 'mo' or 'ma' to these words. Make sure that you use your diagonal letter joins. What words have you created?

rch

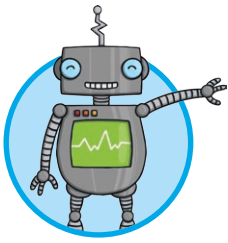
ney

gic

ving

rket

del



Joining the Letter 'n'

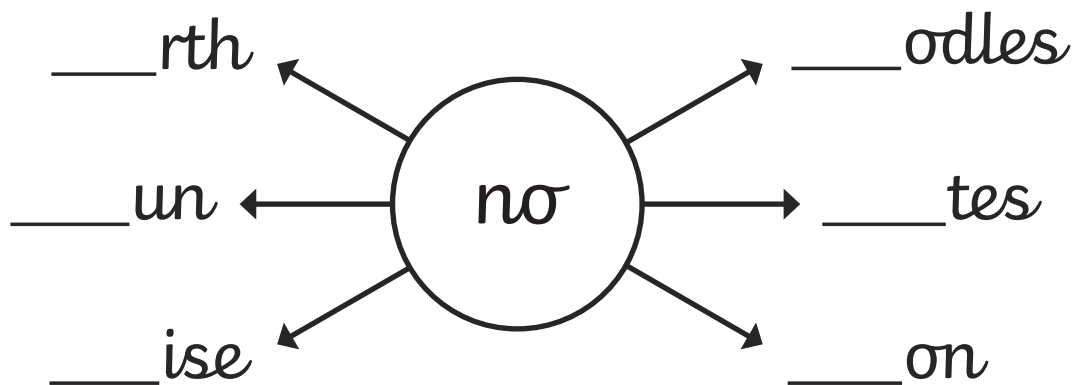
Continue each line using diagonal joins to these anticlockwise letters.

no

na

nd

Add the letters 'no' to the start of these words.
Make sure that you use your diagonal letter joins.



Add 'na' or 'nd' to these words. Make sure that you use your diagonal letter joins. What words have you created?

me

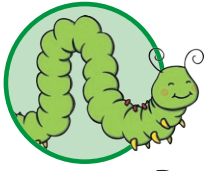
sa y

u er

gra

fi l

s il



Joining the Letter 'o'

Continue each line using a horizontal letter join from your 'o'.

Remember that you are joining to anticlockwise letters so you need to stop your pen/pencil and reverse your hand movement when forming the second letter of each letter pattern.

oo

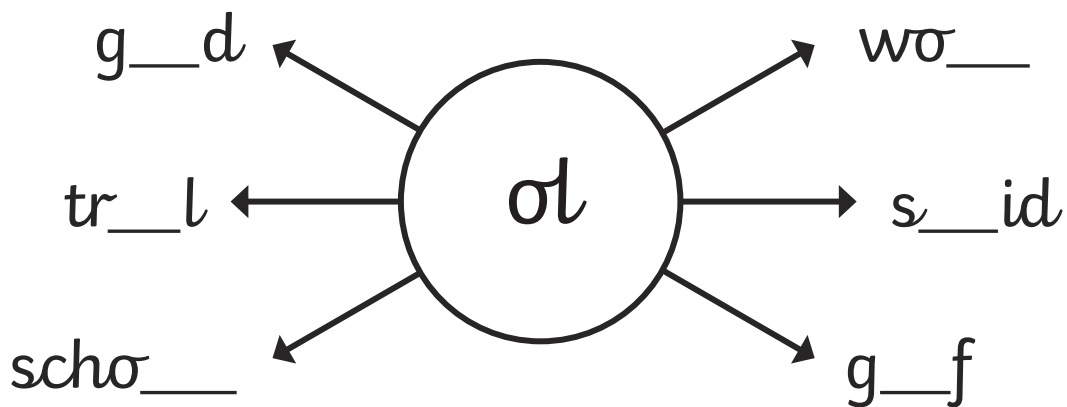
oa

Now, practise joining your 'o' to an ascender and a descender using the same horizontal joining flick...

ol

og

Add the letter pattern 'ol' into these words.



Do these words need 'oo' or 'oa' adding to them? What words have you created?

t__d

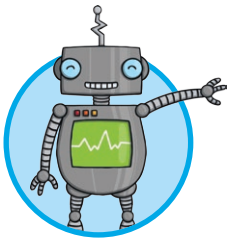
l__k

fl__r

g__l

t__st

st__l



Joining the Letter 'p'

Continue each line using the trickier bottom join from the letter 'p' to these anticlockwise letters.

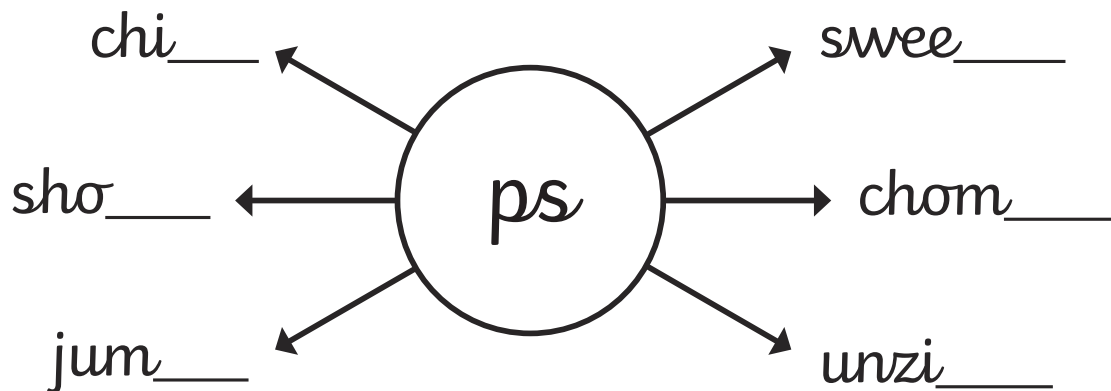
pc

po

pa

ps

Add 'ps' to the end of these words. Make sure that you go underneath the body of your 'p' before flicking diagonally to your 's'.



Add 'pa' or 'po' to the beginning of these words. Make sure that you join carefully from your 'p'. What words have you created?

____und

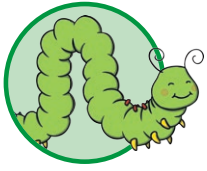
____nda

____rk

____wer

____rty

____nd



Joining to the Letter 'q'

Remember that 'q' is an unjoined letter so we never join from it, but we can join to it. Practise these diagonal and horizontal joins to the letter 'q':

aq

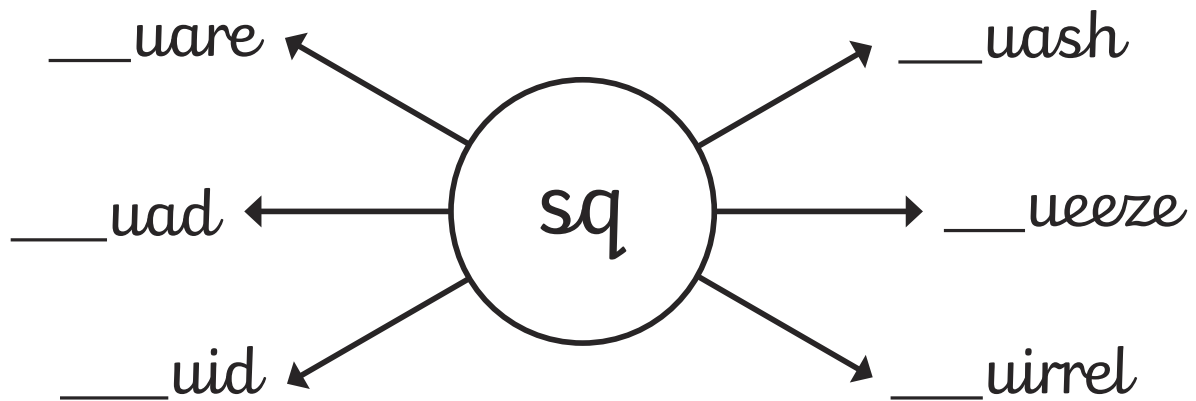
iq

sq

oq

rq

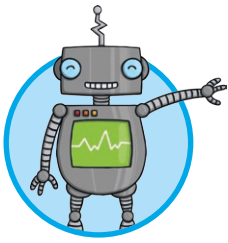
Add the 'sq' letter pattern to these words. Your 's' can join on to your 'q', but remember that you don't join on from your 'q'.



Can you copy out these lines of words with different joins?

liquid

burqa



Joining the Letter 'r'

Continue each line using a horizontal join from the letter 'r'.

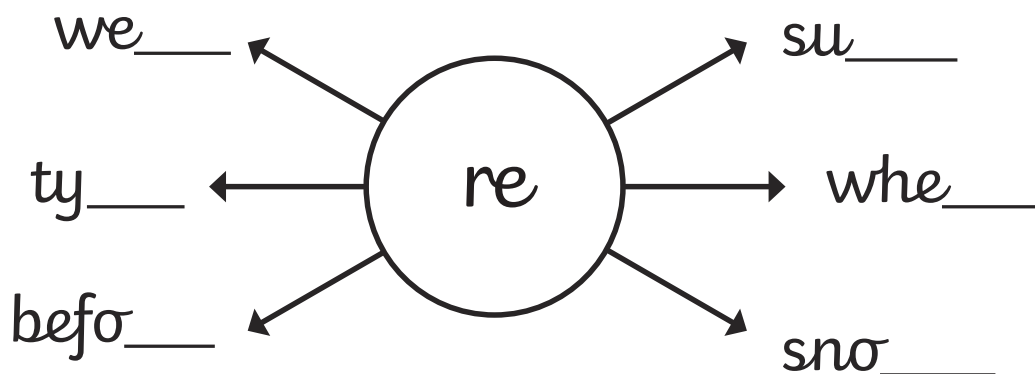
m

ri

ru

re

Add the letter pattern 're' to the end of these words. Make sure that you use your horizontal letter joins.



Add 'ru' or 'ri' to the beginning of these words. Make sure that you use your horizontal letter join from the 'r'. What words have you created?

___sty

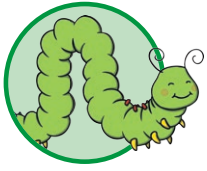
___pe

___ler

___nning

___ding

___ght



Joining the Letter 's'

Continue each line using a trickier bottom letter join flick from your 's'. Remember that you are joining to anticlockwise letters so you need to stop your pen/pencil and reverse your hand movement when forming the second letter of each letter pattern.

sc

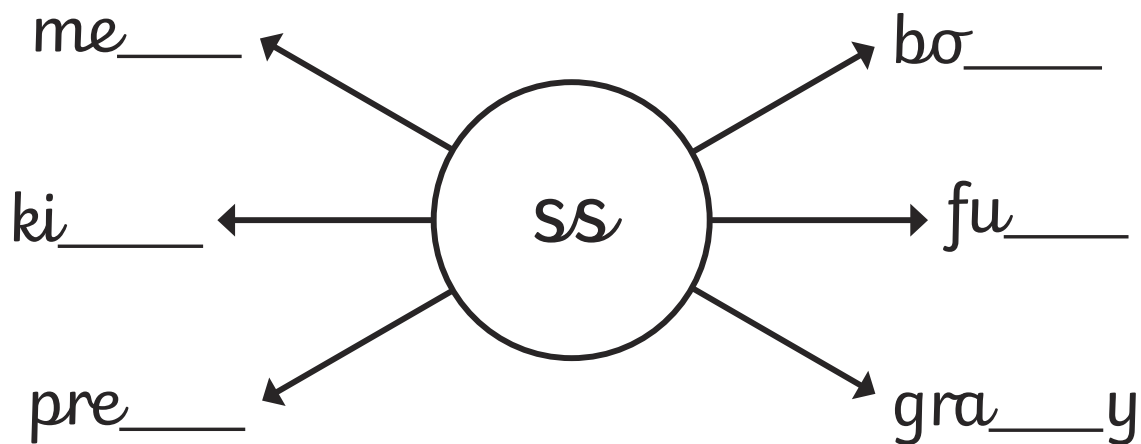
so

sa

ss

sq

Add the letter pattern 'ss' into these words.



Do these words need 'sa' or 'so' adding to them?

What words have you created?

____id ____rry ____dly
 ____und ____ak ____fe



Joining the Letter 't'

Continue each line using diagonal joins. Remember that your 't' should not quite touch the top line.

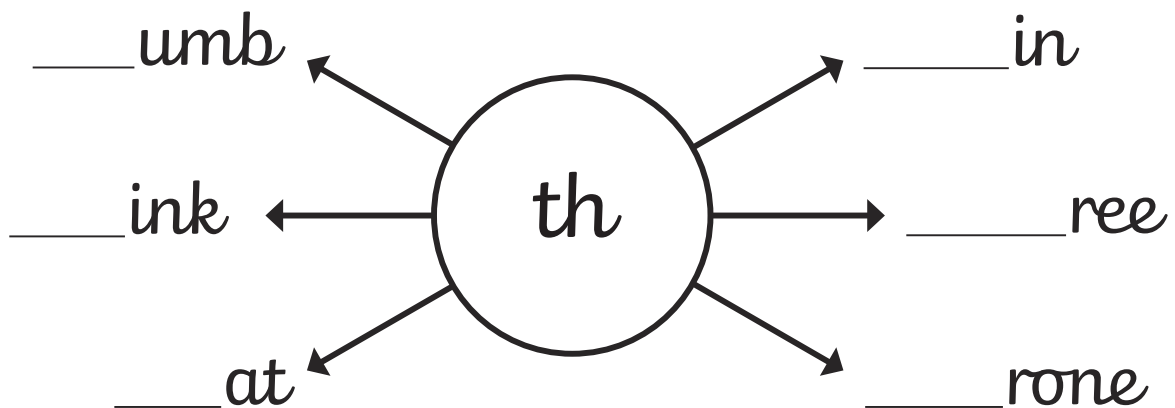
ti

ty

th

tk

Add 'th' to the start of these words.
Make sure that you use your diagonal letter joins.



Add 'th' or 'te' to the end of these words. Make sure that you use your diagonal letter joins. What words have you created?

pa_____

ki_____

la_____

bi_____

ba_____



Joining the Letter 'u'

Continue each line of diagonal joins. Take care to make all of your letters the correct heights and lengths.

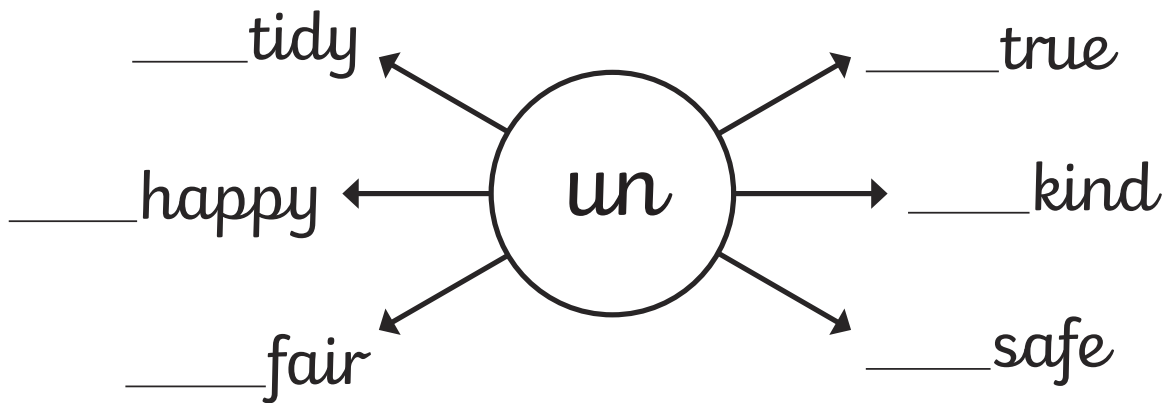
uu

up

uh

ut

Add the prefix 'un' to the start of these words. Make sure that you use your diagonal letter joins.



Add 'ull' or 'unk' to the end of these words. Make sure that you use your diagonal letter joins. What words have you created?

f_____

p_____

s_____

tr_____

sk_____



Joining the Letter 'v'

Continue each line using horizontal joins from the top of the letter 'v'. Take extra care when joining to an anticlockwise letter, and the tricky horizontal join to the letter 'e'.

vv

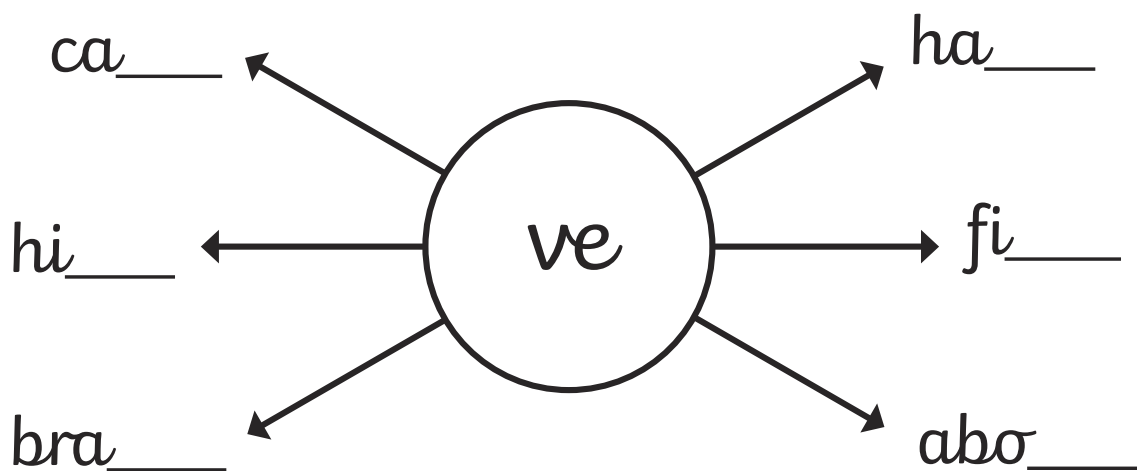
vi

vo

va

ve

Add the letter pattern 've' to the end of these words.



Add 'va' or 'vi' to these words. Make sure that you use your horizontal letter joins. What words have you created?

la

deor

se

n

sit

del



Joining the Letter 'w'

Continue each line using diagonal joins from the bottom of the letter 'w'. Take extra care when joining to an anticlockwise letter.

ww

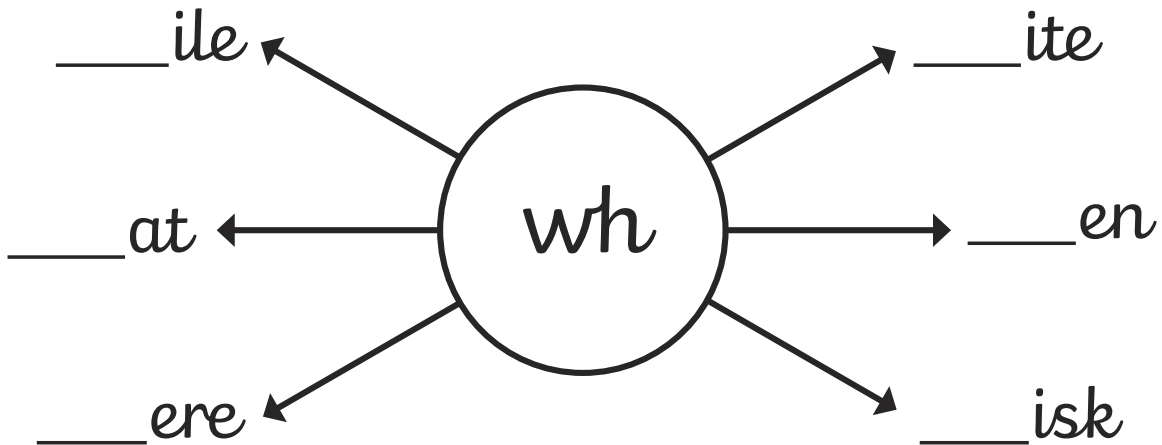
wh

wr

wa

we

Add the letter pattern 'wh' to the beginning of these words.



Add 'wa' or 'we' to these words. Make sure that you use your horizontal letter joins. What words have you created?

s__n

t__nty

__tch

to__r

__ter

__ep



Joining to the Letter 'x'

Remember that 'x' is an unjoined letter so we never join from it, but we can join to it. Practise these diagonal and horizontal joins to the letter 'x':

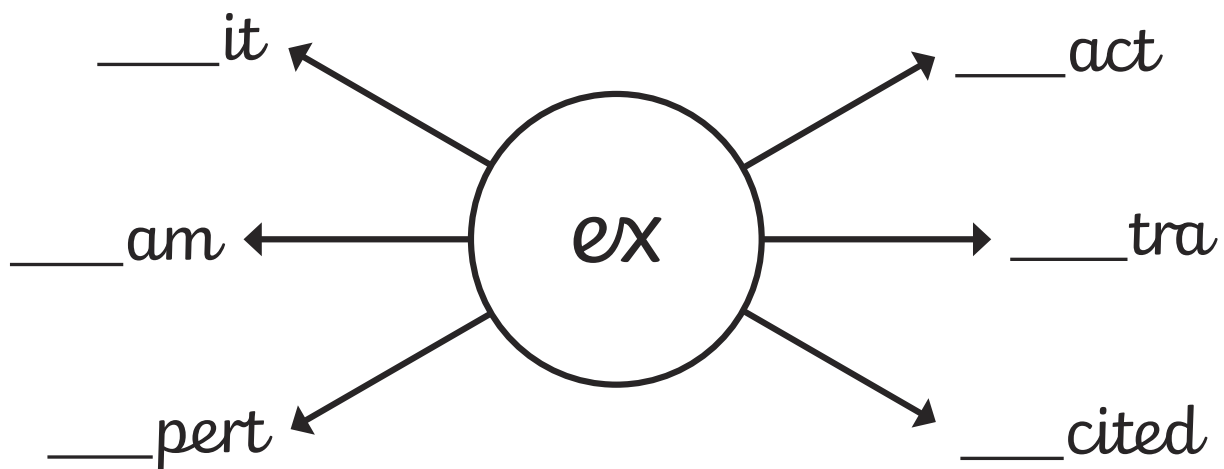
ax

ux

ex

ox

Add the 'ex' letter pattern to the start of these words. Your 'e' can join on to your 'x', but remember that you don't join on from your 'x'.



Add either 'ox' or 'ax' to these words. Join carefully to your 'x' but don't join on from it. What words have you created?

t__i

unb__

rel__

f__es

w__

b__er



Joining to the Letter 'y'

Remember that 'y' is an unjoined letter so we never join from it, but we can join to it.

Practise these joins to the letter 'y':

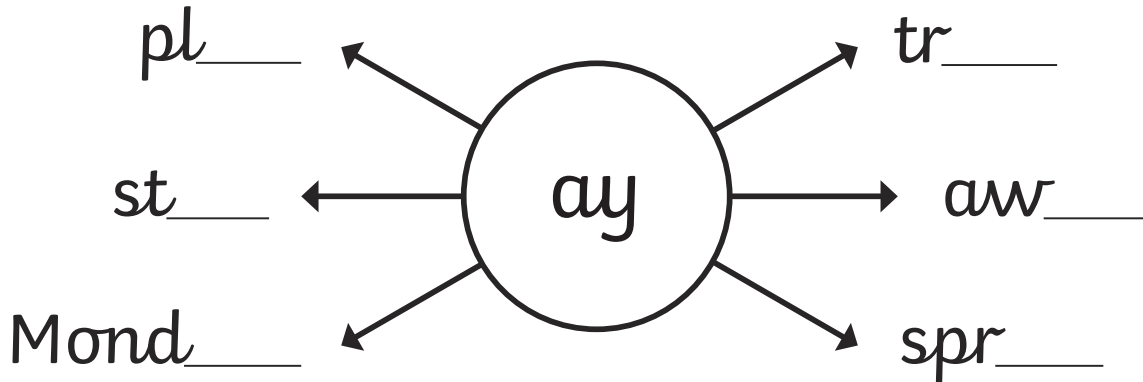
ty

ty

ny

ay

Add the 'ay' letter pattern to the end of these words. Your 'a' can join on to your 'y' using a diagonal join.



Add 'ly' to the end of these words. Join carefully to your 'y'.
What words have you created?

sad____

glad____

kind____

shy____

real____



Joining the Letter 'z'

Continue each line using diagonal joins from the bottom of the letter 'z'. Take extra care when joining to an anticlockwise letter.

zz

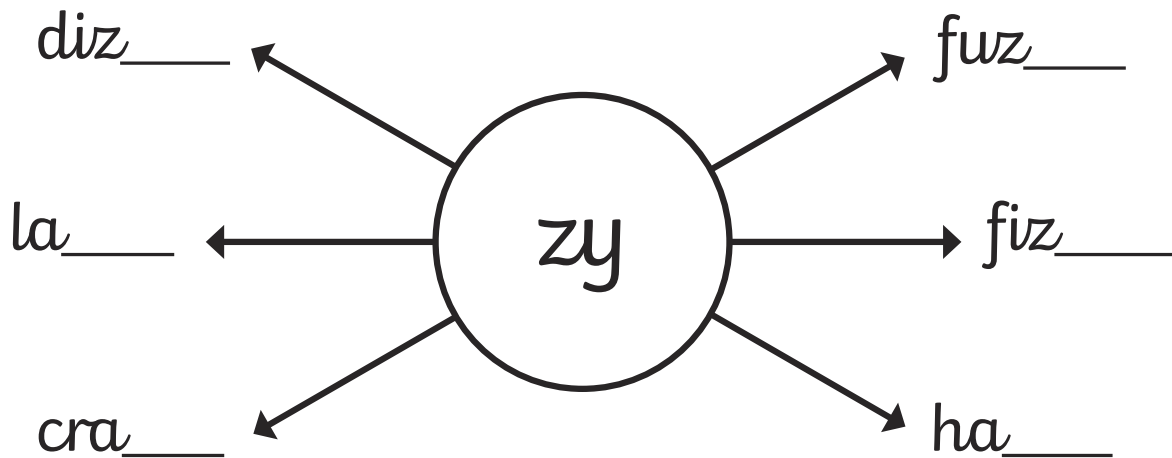
zy

ze

zo

za

Add the letter pattern 'zy' to the end of these words.



Add 'zo' or 'ze' to the beginning of these words. Make sure that you use your diagonal letter joins. What words have you created?

___om

___ro

___mbie

___ne

___st

___o